



This cute little handbag features a piped flap with a magnetic snap closure that is decorated on the front with a favorite button! The finished bag measures 12 1/2" wide X 9" tall X 3" deep.



All content within this document including but not limited to the pattern and instructions is copyrighted. Electronic reproduction and/or distribution is prohibited by law. This pattern is intended for the use of the individual purchaser. Finished products created from this pattern by an individual at home can be sold. Mass production is expressly prohibited. For more information on sew-to-sell guidelines, see <http://www.fishstickdesigns.com/sewn-for-you/>.

**Supplies:**

- 3/4 yard each of two or three coordinating fabrics
- Featherweight fusible interfacing (I used Pellon 911FF)
- 1 1/2"X36" fleece or batting (to pad the strap)
- Decorative 1"-1 1/2" button
- Magnetic snap



Print the pattern pieces found on the last four pages of this PDF. (Be sure to print "actual size" and check the measurement of the 2 1/2" square.) Use the pattern pieces to cut your fabric. You'll also need to cut one rectangle for the strap 6"X36" and one rectangle for the inside pocket 8"X10.



**Iron interfacing** onto both flap pieces, both inner body pieces and both outer bottom pieces. (Do not iron interfacing on strap or outer body pieces.)



**To assemble strap**, fold in half lengthwise and iron.



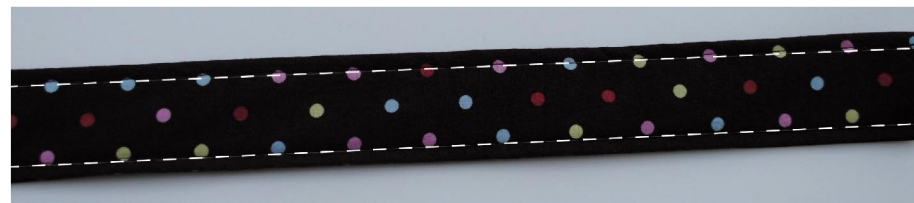
Unfold, then fold edges in to the middle and iron.



To pad the strap, insert the long strip of fleece under one flap.



Fold strap in half again, pin and top stitch approximately 1/4" from each edge.



**To assemble inside pocket**, fold pocket piece in half with right sides facing. Sew around the three raw edges, leaving a 1" opening in one short edge.





Clip corners and turn right side out. Push the corners of your pocket out nice and square. Press. Center pocket on one inside body piece with the folded edge at the top and stitch around the sides and bottom at approximately 1/8". To divide pocket, draw a straight line with washable or disappearing marker down the center of pocket. Stitch straight down this line dividing your pocket into two sections.



**To assemble flap**, begin by pinning piping around edge of outside flap piece. With the straight edge of your flap piece at the top, begin pinning at the top right corner with the heads of your pins facing down. (This way, you'll be able to pull the pins out as you come to each of them.) End at the opposite corner. (No piping will be attached to the top straight edge.)



Using your machine's zipper foot, baste piping at about 1/4" from the raw edges all the way around the flap.



Sew decorative button to outer flap piece. Attach button so that the bottom edge is centered 1" from the bottom edge of the flap. Attach magnetic snap stud to inner flap piece. Center the snap 1 1/2" from the bottom edge of flap.



Place flap pieces right sides together with the outer flap piece on top and pin using the same method as mentioned above (pin heads facing down, starting at upper right corner). Still using your machine's zipper foot, sew to the left of the original stitching line right up against the right side of the piping. Use your fingers to feel the piping and keep the needle right against the edge of it as you go. Sew around three sides and curves, leaving the top straight edge open.



Clip curves and turn flap right side out. Press around edges. Replace your machine's zipper foot with the regular sewing foot.



**To assemble outer body**, begin by attaching socket of magnetic snap to front outer body piece. Center snap 3 1/4" from the top edge. Because this piece has no interfacing, you'll need to reinforce the snap on the wrong side of the fabric with a small folded piece of interfacing as shown.



Beginning and ending 4" from each edge, sew two rows of gathering stitches (the longest stitch on your machine) along the bottom edge of bag outer, one at 1/4" and one at 1/8". Do not backstitch at the beginning or end of stitching. Remove from machine and pull the bobbin threads on each end to gather the fabric.





Line up top edge of outer bottom with gathered edge of outer and check to make sure they are the same length. Even out gathers.



To sew outer body piece to outer bottom piece, line up pieces with right sides together and gathers on top. Pin. Sew at 1/2" making sure that gathers stay even and neat as you go.



Press seam toward bottom. Repeat this process with other outer body layer and outer bottom piece.



Place completed outer pieces right sides together. Stitch around both sides and bottom at 1/2".





Now to make the base of the bag, choose one of the bottom corners. At this corner, you'll need to push the side seam down to meet the bottom seam, creating a triangle. Be sure that your side seam and your bottom seam are lined up well. Pin this in place. Repeat this step, bringing the opposite side seam down to meet the bottom seam, creating a triangle and pin.



Your bag will now look a bit like it has dog ears at the bottom. Like this:



Using a ruler, draw a straight line across from the points where the stitching meets the edge on each side, as shown. The measurement should be about 3".



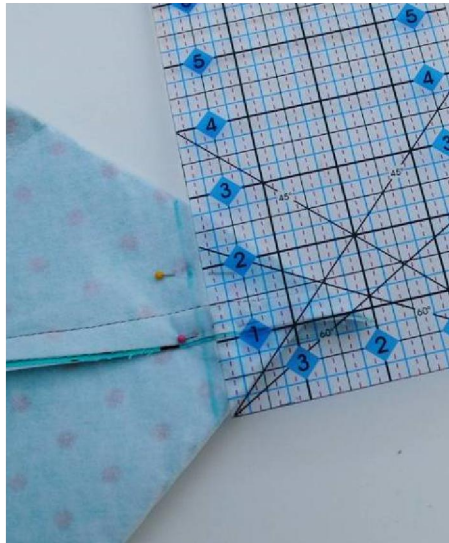
Stitch along this line and trim the excess triangle off. Repeat on opposite side.



Turn outer right side out. The bottom pieces should now form a flat bottom.



**To assemble the inner body layers**, place inner body layers right sides together, stitch around sides and bottom, leaving a 4" opening in the bottom for turning the bag later. To create the base of the inside of the bag, use the same steps as above, except to find where to draw your stitching line, use a ruler to find where the triangle measures 3" across and draw a line. Stitch and cut off excess.



**To attach strap and flap to outer body layers**, turn outer body right side out. Pin flap with the outer layer facing the bag on the back of bag. Be sure to center the flap between the two side seams. There should be approximately  $\frac{3}{4}$ " from the edges of flap to the side seams. Pin one end of the strap to the outer of the bag centered on the side seam. Wrap strap around the other side of bag and pin the other end centered on the opposite side seam. Be sure that your strap is not twisted. Strap edges should line up approximately  $\frac{1}{4}$ " from the edges of flap. Baste flap and both ends of strap to bag at  $\frac{1}{4}$ " from the top of bag.





**To complete assembly**, with outer part of bag right side out and inner inside out, insert outer into inner. Be sure that the flap and the strap are down inside and that the inside pocket is towards the back of your bag. Match up side seams and pin all the way around top edge.



Sew all the way around top edge at 1/2". I like to stitch across the straps, backstitch, then stitch across them again to make sure they stay secure. Turn bag right side out through the opening in the inner part of bag. Check to make sure that all looks well, then pin and stitch your opening closed.



Push inner of bag down inside outer and make sure your corners are all pushed out nicely.



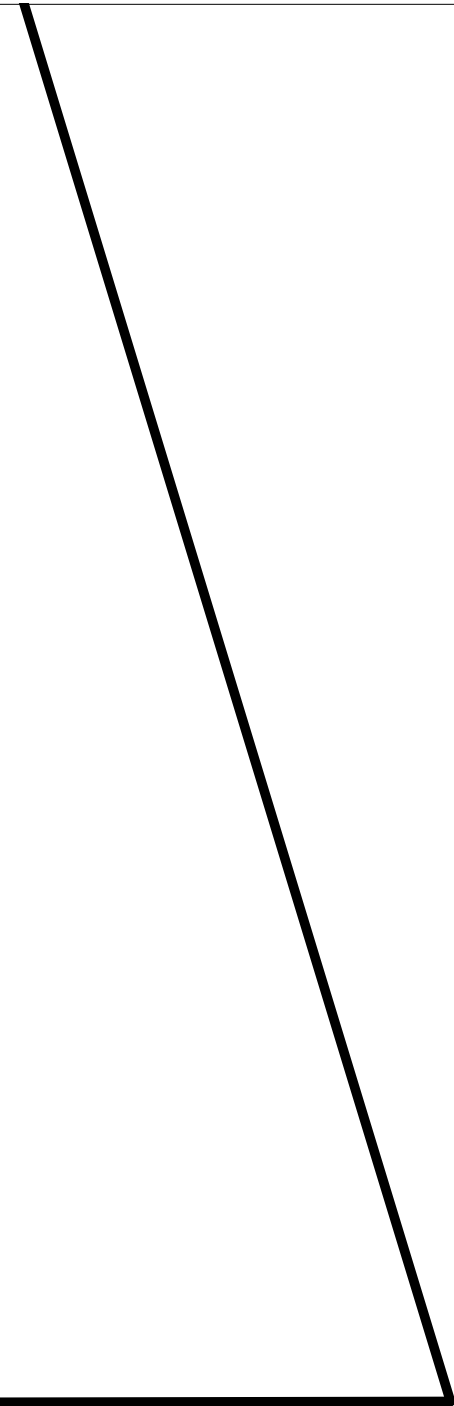
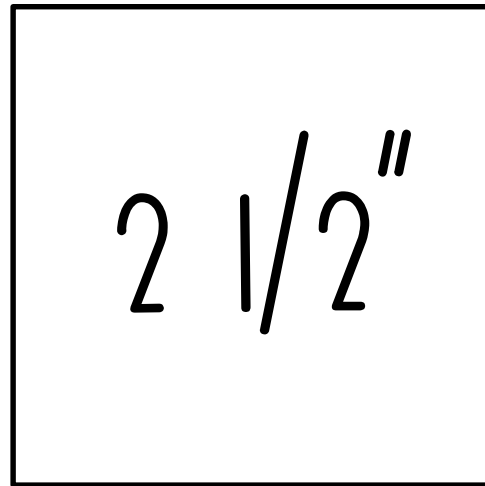
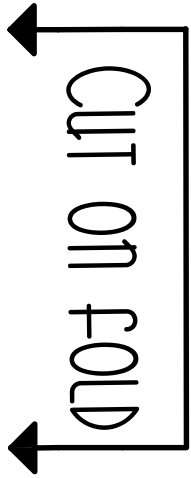
Copyright Fishsticks Designs 2010  
[www.fishsticksdesigns.com](http://www.fishsticksdesigns.com)





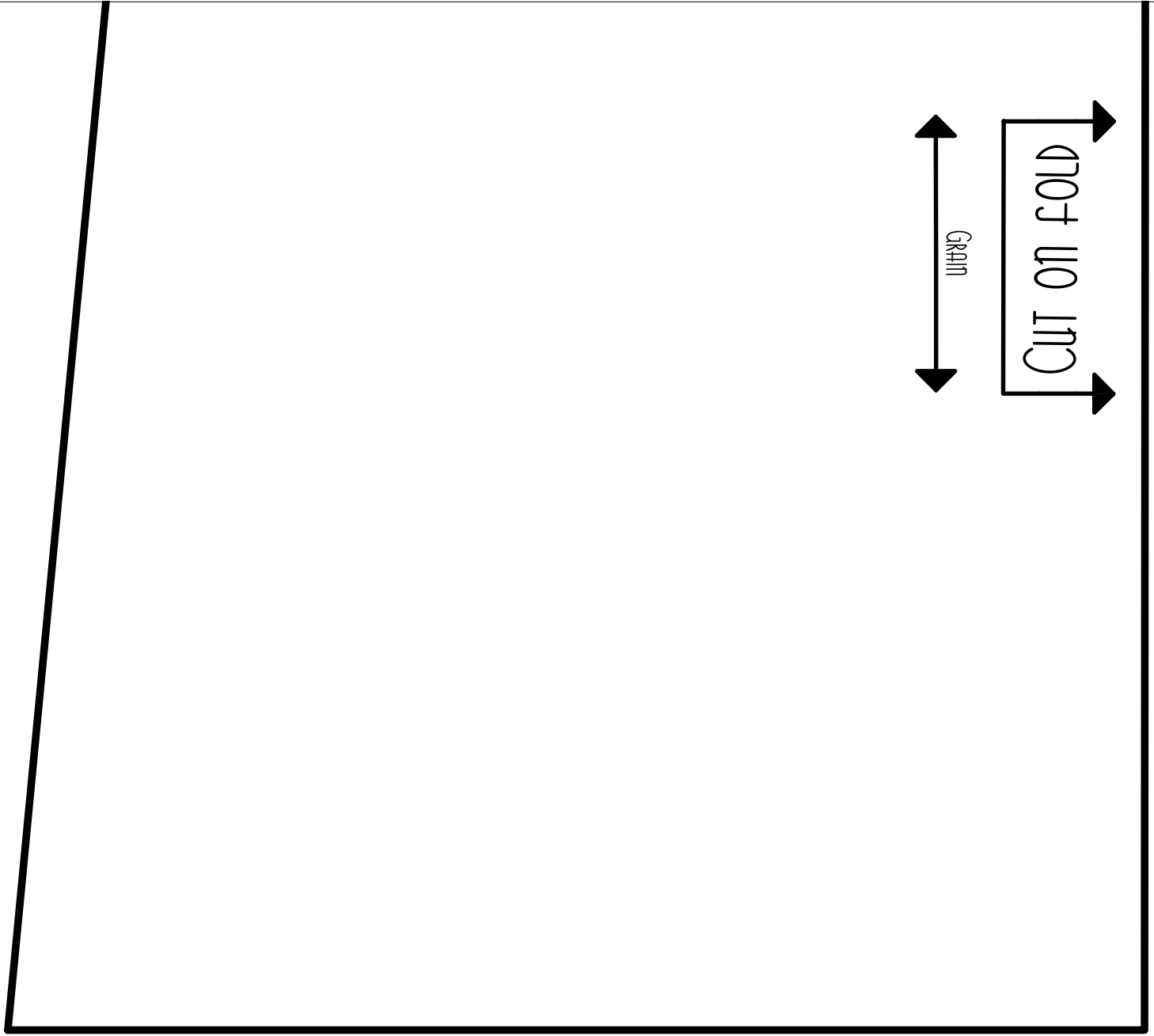
# Outer Body

Cut 2 from outer fabric on fold

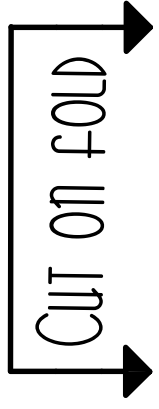


COPYRIGHT 2010 FISHSTICKS DESIGNS





GRAIN



CUT ON FOLD



# THE JOY-NICOLE BAG



[WWW.FISHSTICKSDESIGNS.COM](http://WWW.FISHSTICKSDESIGNS.COM)

Flap  
Cut 2 on fold  
1 from outer fab  
1 from inner fab



